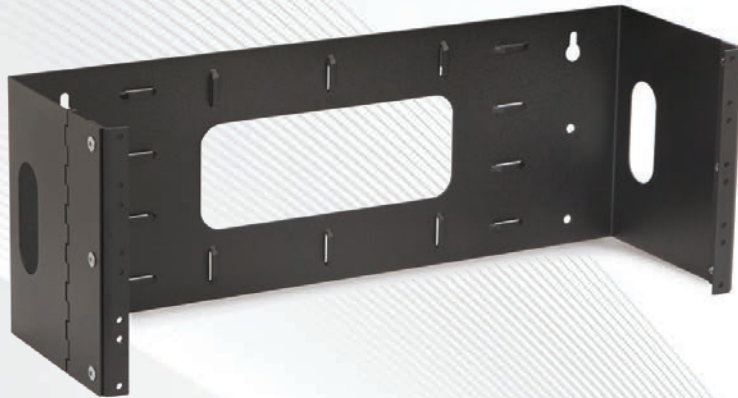


## PATCH PANEL BRACKETS



The Kendall Howard Patch Panel Bracket makes mounting patch panels and other shallow equipment simple and easy. The unique hinged design allows installed equipment to swing to the left or right 180 degrees for convenient access to the back. These hinged wall mount systems are a fantastic alternative to larger, more expensive solutions that end up wasting space.

- 6" usable depth
- 180 degree swing-out
- 10-32 tapped rails
- 19" EIA 310-D compliant
- Made in the USA
- Limited Lifetime Warranty

### FEATURES

**Low Cost Wall Mount Solution** - The hinged design delivers the functionality of a swing-out rack without the added cost. Perfect for small business or home office application.

**Numerous Cable Tie Points** - The Patch Panel Brackets are packed with built-in cable tie downs and access holes, ensuring your installation is neat, organized, and ready for action.

**Easy to Use** - Once the bracket is mounted to the wall, simply mount the device to the hinged side of the bracket, swing it open, and terminate the cables. When completed, close the bracket and secure to the other side of the bracket.

## PATCH PANEL BRACKET SPECIFICATIONS



Size	<b>1U</b>
Part Number	1916-3-200-01
Width	19.25"
Depth	6"
Height	1.75"
Warranty	Limited Lifetime Warranty
Shipping Method	FedEx Ground



Size	<b>2U</b>
Part Number	1916-3-200-02
Width	19.25"
Depth	6"
Height	3.5"
Warranty	Limited Lifetime Warranty
Shipping Method	FedEx Ground



Size	<b>4U</b>
Part Number	1916-3-200-04
Width	19.25"
Depth	6"
Height	7"
Warranty	Limited Lifetime Warranty
Shipping Method	FedEx Ground



Size	<b>6U</b>
Part Number	1916-3-200-06
Width	19.25"
Depth	6"
Height	10.5"
Warranty	Limited Lifetime Warranty
Shipping Method	FedEx Ground